

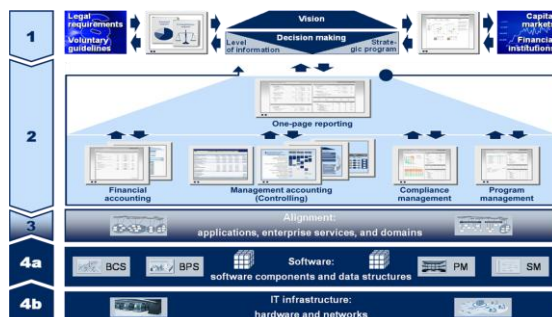
Objective: Managing the Company!

The headquarters finance function is becoming more and more significant as a factor in successful company management. Decisions made here ultimately affect the success of the company. Having the right information, properly processed, and in the quality required, has become a fundamental competitive advantage.

These days, companies employ a range of reporting systems in order to obtain this competitive advantage. This results in a heterogeneous and partly redundant reporting structure and prompts two questions: Can I trust the information that I have before me? And is this information good enough to base operational and strategic decisions on it?

Integrative System Architecture

This is where the Corporate Navigator¹ comes in. It serves as a framework for company management systems and unites the four levels, strategy, organization, alignment, and IT support (software and IT infrastructure) within an integrative architecture. The Corporate Navigator provides a structure for the complex issue of company management and helps to focus on the essentials.



Integrative System Architecture of the Corporate Navigator

Beginning with an alignment to support strategic management, fulfillment of legal and regulatory requirements and also the information requirements of the capital market, the system architecture guarantees the integration of underlying reports, applications, software and the IT infrastructure.

Individual Decision Support

A key problem of Management Cockpits is that the information displayed frequently does not correspond to that which is required. The Corporate Navigator fulfills the specific information requirements by way of a multi-level reporting hierarchy. At the first level, aggregated reporting provides an overview of your portfolio using three key figures. Le-

How You Benefit From the Corporate Navigator

Deployment of the Corporate Navigator provides significant advantages for your company management:

- Intuitive handling and demand-oriented information display shorten your decision phases.
- You have a consistent, integrated, reliable, and at the same time, highly formatted basis for decision making.
- Management and legal reporting meet the requirements of compliance and the capital market.
- The use of proven technology means ease of handling and scalability.
- By way of a continuous authorization structure, information distribution is customized to requirements.

Levels two and three offer more thorough analysis using 20 key figures and a detailed analysis.



Corporate Portfolio in the Corporate Navigator

The Corporate Navigator's information display begins with the top three key figures in the **Corporate Portfolio**. You determine the key figures and they are displayed here at an aggregated level for the entire portfolio. Using a graphical display, you can show a clear overview of your company's performance.

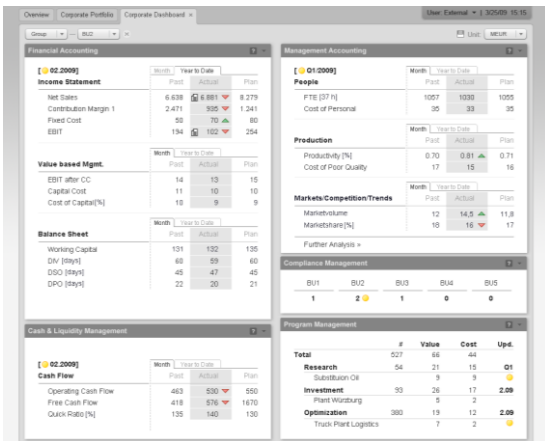
The **Corporate Dashboard** provides an initial more detailed look at the individual divisions or subsidiaries. This serves as an entry point to the analysis level and enables you to drill right down in order to analyze any problems. Scorecard elements and tables are used to display a clear overview of the key figures of a division or subsidiary company according to the one-page reporting approach. Further analysis is enabled with a detailed drilldown function.

¹ Competence Center. Corporate Management Systems Institute of Information Management, University of St. Gallen, Mueller-Friedbergstraße 8, 9000 St. Gallen, Switzerland, <http://web.iwi.unisg.ch>

Germany
 cundus AG
 Schifferstrasse 190
 47059 Duisburg
 Germany
 Phone
 +49 203 3175-00
 Fax
 +49 203 3175-099
 www.cundus.de
 info@cundus.de

Switzerland
 cundus Switzerland AG
 Thurgauerstrasse 40
 8050 Zürich
 Switzerland
 Phone
 +41 44 307 37 40
 Fax
 +41 44 307 35 01
 www.cundus.com
 info@cundus.com

United Kingdom
 cundus Ltd.
 268 Bath Road
 Slough SL1 4DX
 United Kingdom
 Phone
 +44 1753 72 57 81
 Fax
 +44 1753 70 88 10
 www.cundus.co.uk
 info@cundus.co.uk



Corporate Dashboard in the Corporate Navigator

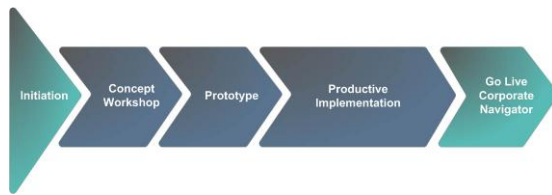
Corporate Analysis represents the third level. Here you will find – grouped by topic – detailed analyses for financial accounting, management accounting (controlling), compliance and program management. Financial accounting provides an overview of your principal financial key figures for the current period even before the period has ended. Your most important non-financial key figures are displayed in management accounting. Compliance management provides an overview of compliance issues especially with regard to risk management. Program management contains an exact illustration of your strategic projects.



Corporate Analysis in the Corporate Navigator

Methodical Procedure for Project Success

cundus has developed a procedure model for implementation of the Corporate Navigator and this integrates the services and methods of a Corporate Navigator project into a practically proven procedure. The first phase involves a concept workshop in which the company vision and the benefits to be gained from a Corporate Navigator project are worked on.



cundus procedure model

Based on this, the relevant controlling key figures and the structure of the required analyses are developed. The results of this phase are the cockpit structure, screenshots, a rough specification and an architecture concept.

The second phase is the **implementation of the prototype** and here, based on test data, a navigation path and an interactive graphic are implemented. Also, a rough functional specification, a project plan, and a detailed cost estimate are produced.

In the final phase, the **productive implementation**, the key figure system is defined and the cockpit levels are modeled definitively. Then the implementation takes place and data and integration tests are carried out. The result is a quality-assured Corporate Navigator, appropriate documentation and additional fine-tuning before the final goal - "Go Live".

Take Advantage of Our Experience

Through several years of experience performing implementations for customers in various industries, we have continuously optimized the technical implementation of the Corporate Navigator concept. As a result, we can now offer the cundus X-Frame, a software module that we have developed especially for implementation of the Corporate Navigator on the basis of SAP Business Objects Xcelsius.

Why cundus?

Exclusive partner

As your exclusive implementation partner, cundus delivers not only the technical know-how but also the sound business concept of the Corporate Navigator

Short implementation time

As a result of our extensive experience, the cundus X-Frame guarantees fast implementation independent of the source system

Risk minimization

An introductory project (starter package) clarifies the technical feasibility "in time" and "in budget"

Modular structure

The modular structure of the Corporate Navigator enables you to add enhancements as required – even using your own ID department

Germany

cundus AG
Schifferstrasse 190
47059 Duisburg
Germany

Phone
+49 203 3175-00

Fax
+49 203 3175-099

www.cundus.de
info@cundus.de

Switzerland

cundus Switzerland AG
Thurgauerstrasse 40
8050 Zürich
Switzerland

Phone
+41 44 307 37 40

Fax
+41 44 307 35 01

www.cundus.com
info@cundus.com

United Kingdom

cundus Ltd.
268 Bath Road
Slough SL1 4DX
United Kingdom

Phone
+44 1753 72 57 81

Fax
+44 1753 70 88 10

www.cundus.co.uk
info@cundus.co.uk